

SL-SERIES

CM102BSL-3G

INTRODUCING THE NEW HDR EMULATION 10,2" LCD Monitor ULTRA LIGHT DESIGN

2 x 3G SDI Inputs | SFP | HDMI



10,2" HDR Pro LCD Monitor with 1200 nits (High brightness) and Quad Mode

CM102BSL-3G is a new High Brightness 1200 cd/m² professional LCD Monitor with 3G/HD/SD-SDI, HDMI, CVBS inputs and SFP Module slot for optional SFP modules (optical fiber,...) with Quad Mode integrated.

With our new superior quality 12 bit image processing engine, HDR visualization (HLG, PQ, SLOG) options and 3D LUT colour management options, the CM102BSL-3G accurately reproduces all standard sources.

The rugged and lightweight aluminium design and wide viewing angles displays, makes it easy to use for outdoor applications, and our energy-efficient board design and LED backlight grant low temperature while working.



Features:

- **2 x 3G/HD/SD-SDI Autosensing inputs, 1 x HDMI and 1 x CVBS**
- Optional optical fiber input (**SFP module**)
- LED Backlight (reduced power consumption)
- **12 bit video processing engine**
- 1920 x 1080 resolution and **Brightness: 1.200 cd/m²**
- Wide viewing angle
- **3D LUT** for color management. Rec709, EBU, SMPTE-C, DCI and custom color spaces
- Cost-effective **HDR pre-visualization**. Preview modes: **HLG, PQ, SLOG**
- **Quad Mode** visualization
- Brightness, Contrast, Saturation adjustment, Colour temperature adjustment and Gamma correction, Blue Only / Monochrome, Aspect Ratio Selection (4:3, 16:9), Markers and safety areas, ATC Time code (SDI), Backlight adjustment
- Stereo Speakers Audio output
- No audio, Silence, No input and Black image on screen alarms
- Real time colour Waveform and Vectorscope
- 16 Channel Audio Level Meters
- 16 characters UMD and video format information
- Tally and UMD, TSL 3.1 and 5.0 compatible
- Quick control: Easy to use double function keyboard with 5 user configurable direct keys and encoder
- Free user friendly control software (SNMP compatible)
- Rugged and lightweight aluminium design

New Quad-Mode and SFP Slot

Adapt your monitors to your needs, select one of the optional SFP modules (optical fiber, HDMI,...) and add more inputs in the future! NOW IP SMPTE-2110 and IP SMPTE-2022 AVAILABLE!

HDR support and 3D LUT Display Calibration

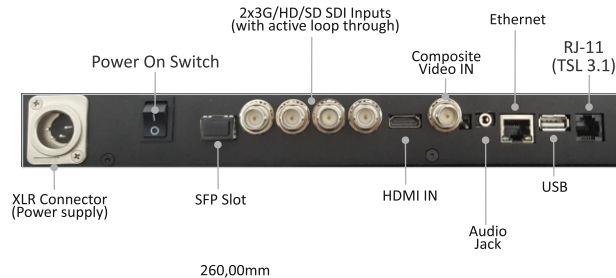
HDR visualization (HLG, PQ, SLOG) and 3D LUT Color Management options for accurate reproduction of all standard sources (Rec709, EBU, SMPTE-C and DCI) and custom color spaces. With our **tetrahedral LUT interpolation** engine of 4.913 points (17x17x17) that offers a higher degree of precision for accurate reproduction. All monitors are factory calibrated using LightIllusion's LightSpace CMS.

Rugged and Lightweight Design

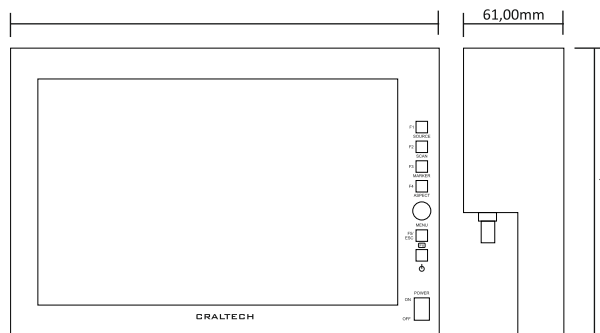
SL-3G series have a lightweight and rugged aluminum chassis and direct lighting keys that can be configured with any of the adjustments of the OSD menu or to access directly to Quad-Mode or Full Screen Views. All connectors are all down-side mounted making them real slim design, allowing to be integrated in critical space locations.

SPECIFICATIONS

	CM102BSL-3G
Display Size	10,2" LED Backlight
Resolution	1920 X 1080
Viewing angle	178,178
Brightness	1.200 cd/m ²
Contrast	1.000:1
Color Depth	16.7 Million
3G/HD/SD-SDI inputs	2 x BNC with active loop through of each input Supported resolutions: 1080p (60 / 59.84 / 50 / 30 / 29.97 / 25 / 24 / 23.98 / 25sF / 24sF / 23.98sF), 1080i (60 / 59.94 / 50), 720p (60 / 59.94 / 50), 480i (59.94), 576i (50)
HDMI input	1 HDMI (Not HDCP Support)
CVS input	1xBNC
Audio IN	Embedded Audio. 16 Channels Audio Level Meters
Audio out	Analog Stereo (Phone Jack) and Stereo Speakers
UMD and Tally	On screen tally, and 16 characters UMD
Remote control	Ethernet
Chassis	Aluminium. Textured Black Powder Coat
Dimensions	260 x 175 x 61 mm
Weight	1 Kg
Power Consumption	24W
Power supply	12V
Accessories	-



Dimensions



Quad Mode

Each window has image resize capability in Quad and Full Screen view.



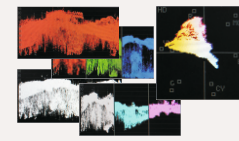
SFP Slot

Optional SFP modules (Optical fiber, IP SMPTE-2022,...)

Professional Broadcast Adjustments



12 bit image processing



Waveform & Vectorscope



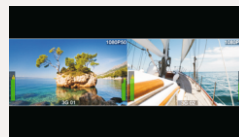
16 Channel Audio Level Meter



3D LUT to reproduce various colour spaces



1:1 Pixel Mapping



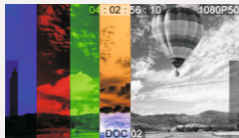
PaP - Picture and Picture



Focus Assist



False Colour & Exposure Check



Monochrome, Blue Only...



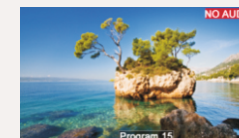
Markers



Timecode & Source Information



Tally and UMD



Alarms

No Input, Black Image, No Audio, Silence



Encoder & Dual Functionality Direct Keys



S4B DESIGN & CONTROL SOFTWARE Lite