

QUAD SERIES

CM185SL-3G4



18,5" HDR Quad-Split LCD Monitor

4 x 3G SDI Inputs | HDMI | DVI | Quad Split | Ultra Light

General Information

Key Features

Specifications

Image gallery

Ordering info

Product Documents

Professional LCD Monitor with built-in Quad Split and HDR pre-visualization

CM185SL-3G4 is a cost-effective Full HD 18,5" IPS LED Backlight LCD Monitor with **4 x 3G/HD/SD-SDI** Autosensing inputs and **4K downscale capability**. With high quality 12 bit image processing engine, the **CM185SL-3G4** is a space-saving (Only 6RU), fanless and energy-efficient hardware based compact LCD Monitor with built-in Quad-split (no PC and no hard-drive) with low processing delay. **CM185SL-3G4** integrates a keyboard with user configurable direct keys and encoder to navigate through the OSD menu and control all the professional features as UMD & Tally, Aspect Ratio Selection, Markers, Real time color Waveform and Vectorscope, 16 Channel Audio Level Meters, Alarms, Timecodes, backlight and color temperature adjustment,...

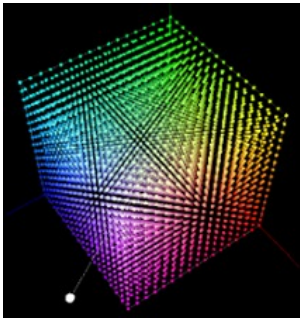
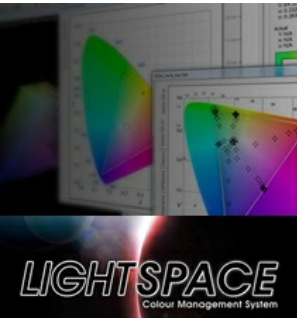
The LED backlight displays and our energy-efficient board design grant low temperature while working. The rugged and lightweight aluminium design and wide viewing angles displays, makes them easy to integrate. **Display up to 4 3G SDI inputs with the best quality, all features and best price!**

Display 4K signals at best price

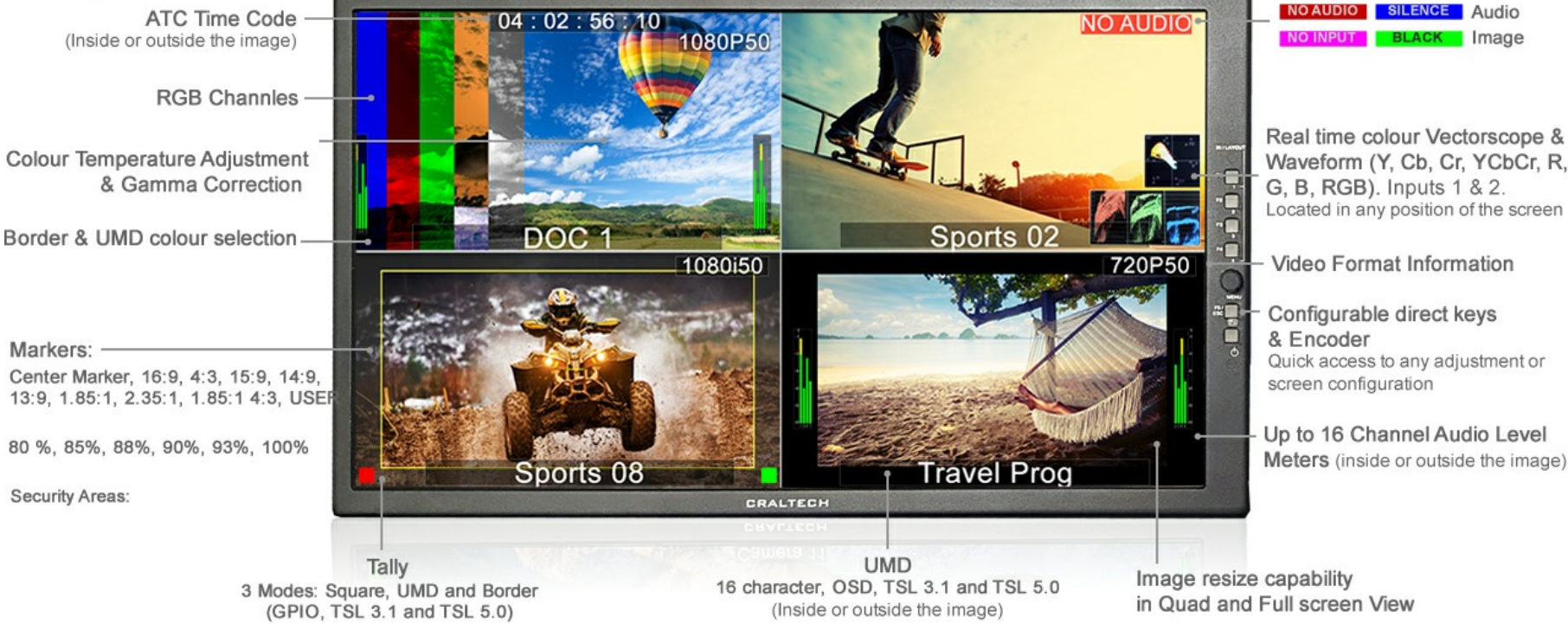
Quad-Link SQD or 2SI 3G-SDI signals support (using downscale capability). Quad borders are removed and image adjusted to perfect display a 4K image!

HDR support and 3D LUT Display Calibration

HDR Pre-visualization (HLG, PQ, SLOG) and **3D LUT** Color Management options for accurate reproduction of all standard sources (Rec709, EBU, SMPTE-C and DCI) and custom color spaces. With our **tetrahedral LUT interpolation engine** of 4.913 points (17x17x17) that offers a higher degree of precision for accurate reproduction. All monitors are factory calibrated using LightIllusion's LightSpace CMS.



All features you need!



Rugged and Lightweight Design

SL-Series have an Ultra-light weight and rugged aluminum chassis and direct lighting keys that can be configured with any of the adjustments of the OSD menu or to access directly to Quad or Full Screen Views. With a high quality 12 bit image processing engine, these monitors offers a minimum processing delay, just the same delay as a standalone monitor. All monitors of SL-Series integrate LED backlight displays with wide viewing angles, and our energy-efficient board design that grant low temperature while working. All connectors are all down-side mounted making them real slim design, allowing to be integrated in critical space locations. All monitors from 18,5" to 23,8" are compatible with VESA 100 mount systems, and optional brackets for 19" rack and table stands can be supplied. 32" and 42" monitors are VESA 200 compatible.

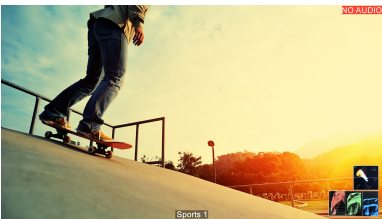


Maximum flexibility and Minimum delay

Select between Quad View or Full Screen View of any of your sources. In Quad Mode each quadrant can display sources with different format (1080i50Hz, 1080p25Hz,...), and can integrate up to 16 channel Audio Level Meters of embedded audio, real time color Waveform and Vectorscope, Time code,... Each window has image resize capability in Quad and Full Screen view, so scopes, audio Level Meters,... can be located inside or outside the image. All this adjustments can be made using the OSD menu or remotely using our Soft4Boxes Lite control software. **All these features with just the same delay as a professional standalone monitor (less than 1 frame delay, only 20 ms)!**



Quad View



Full screen View



Image resize capability in Quad and Full screen View



QUAD SERIES

CM185SL-3G4



18,5" HDR Quad-Split LCD Monitor

4 x 3G SDI Inputs | HDMI | DVI | Quad Split | Ultra Light

General Information

Key Features

Specifications

Image gallery

Ordering info

Product Documents

- 18,5" Ultra-Light chassis LED Backlight LCD Monitor
- Built-in Quad Split
- 4 x 3G/HD/SD-SDI inputs
- Hardware based (NO Pc, NO hard-drive)
- Space-saving, fanless, energy-efficient and lightweight aluminium design
- Rugged and user friendly system for easy integration
- 12 bit image processing engine with low processing delay
- Quick control: Easy to use keyboard with user configurable direct keys and encoder
- Brightness, Contrast, Saturation adjustment
- Color temperature adjustment (5600K, 6500K, 9300K and User (R, G, B Gain and Bias adjustment))

- Gamma correction
- Blue Only / Monochrome
- Aspect Ratio Selection (4:3, 16:9)
- Markers and safety areas
- ATC Time code
- No audio, Silence, No input and Black image on screen alarms
- Real time color Waveform (Selectable RGB, R, G, B, YCbCr, Y, Cb, Cr) and Vectorscope (SDI 1 and SDI 2)
- 16 Channel Audio Level Meters (embedded audio)
- 16 characters UMD and video format information per input
- Tally and UMD, TSL 3.1 and 5.0 compatible
- Free user friendly drag and drop control software and firmware update by USB

Professional broadcast adjustments

These monitors have all professional features and adjustments as UMD and Tally, Blue Only, Aspect Ratio Selection, Markers, Real time color Waveform and Vectorscope (SDI 1 and SDI 2), 16 Channel Audio Level Meters, Alarms, Timecodes, backlight and color temperature adjustment (5600K, 6500K, 9300K, and RGB Gain and Bias adjustment),... SFX-3G4 monitors integrate user configurable direct keys and encoder to easy navigate through the OSD menu. Any adjustment can be located in a direct key, to access functions just with a press, and keys LED lights can be turned off if required for dark environments.



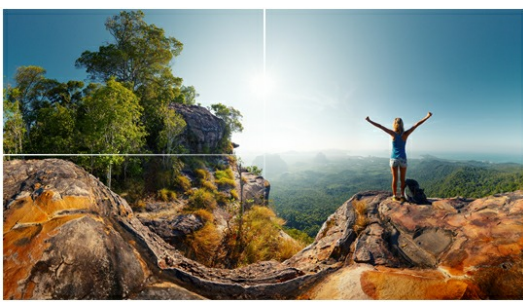
HDR Pre-visualization

HDR Pre-visualization (HLG, PQ, SLOG) with tetrahedral LUT interpolation engine of 4.913 points (17x17x17)



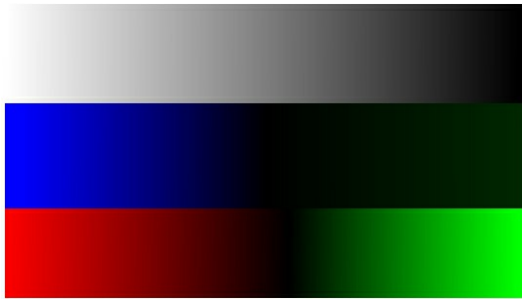
3D LUT

3D LUT Color Management options for accurate reproduction of all standard sources (Rec709, EBU, SMPTE-C and DCI) and custom color spaces



4K Format Support

Quad-Link HD-SDI signals support (using downscale capability and only available for references with 1920x1080 resolution panels). Quad borders are removed and image adjusted to perfect display a 4K image



12 bit image processing

Superior quality 12 bit image processing engine that offer smooth gradients without banding.



Markers

Wide range of markers and security areas are available with line color and curtain transparency selection. A User Marker is available if any of standard markers fits your requirements.



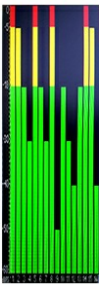
Color Temperature and Gamma Selection

Professional colorimetry broadcast adjustments, with Gamma Correction and color Temperature selection (5600K, 6500K, 9300K and user with Red, Green and Blue, Gain and Bias adjustments)



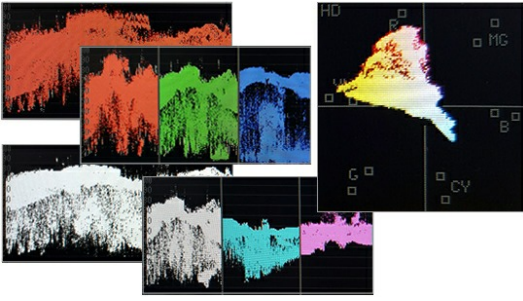
Blue, Red and Green Only, and Monochrome

Blue Only, Red Only, Green Only, Blue All, Red All, Green All, Monochrome and Inverse.



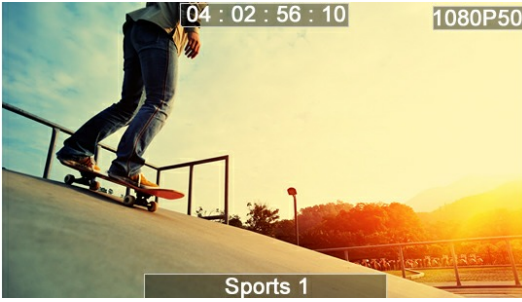
16 Channel Audio Level Meter

Display up to 16 Channel Audio Level Meters with a wide range of options (All together, Separate in pairs-odds,... Selectable Yellow and Red color level and two different sizes.



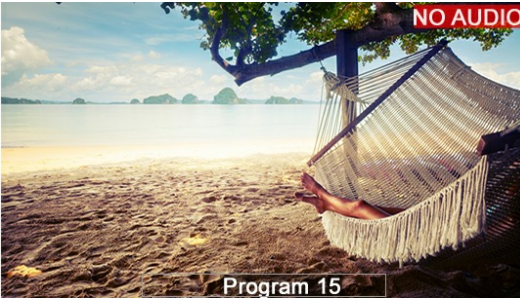
Waveform & Vectorscope

Real time color Waveform and vectorscope. Select between RGB, R, G, B, YCbCr, Y, Cb, Cr Waveform and two different sizes of scopes. Locate the scopes anywhere on the source quadrant.



Timecode and Source Format Information

On screen ATC Timecode information and Video Format Information



Alarms

On screen video and audio alarms with selectable color and time selection. No Input, Black Image, No Audio, Silence.



Tally and UMD

Red, Green and Yellow tally and 16 character UMD compatible with TSL 3.1 and TSL 5.0. Three tally modes available: Square, Border and UMD (all can be activated together)



Encoder & Dual Functionality Direct Keys

Encoder to easy navigate through the OSD menu, and direct keys with dual functionality (fixed/configurable). Activate [Fn] Mode to the keys with your custom configuration and access your favourite adjustments just with a press. Keys LED lights can be turned off if required for dark environments.



Border & Text color selection

Selectable Border and Text color. Available colors: black, white, red, green, blue, cyan, magenta, yellow and 7 grey levels.



Soft4Boxes Pro Control Software

Soft4Boxes Pro is a software to control our SFX Series Monitors (Stand Alone & Quad-Split versions). S4B PRO is an intuitive and user-friendly "drag & drop" control software. * Click here for more information!

QUAD SERIES

CM185SL-3G4



18,5" HDR Quad-Split LCD Monitor

4 x 3G SDI Inputs | HDMI | DVI | Quad Split | Ultra Light

General Information

Key Features

Specifications

Image gallery

Ordering info

Product Documents

LCD DISPLAY

- 1920 x 1080 pixels LED Backlight display
- Brightness: 350 cd/m²
- Contrast: 1000:1
- 178,178 Wide viewing angles

VIDEO INPUTS

- 4 x 3G/HD/SD-SDI inputs

3G-SDI

- SMPTE 424M-2006 level A and Level B Dual Stream (B-DS)
- Format: 1920x1080p (60, 59.94, 50)
- Cable lenght: 85m Belden 1694A
- BNC Connector

HD-SDI

- SMPTE 274M and SMPTE 296M
- Formats: 1080p (30, 29.97, 25, 24, 23.98, 30PsF, 29.97PsF, 25PsF, 24PsF, 23.98PsF) 1080i (60, 59.94, 50) 720p (60, 59.94, 50)
- Cable lenght: 100m Belden 1694A
- BNC Connector

SD-SDI

- SMPTE 125M/259M
- Formats: 480i (59.94) 576i (50)
- Cable lenght: 250m Belden 1694A
- BNC Connector

GPIO CONNECTOR

- GND Contact closure

ETHERNET

- RJ-45 Connector

USB CONNECTOR

- Upgrade system

DIMENSIONS

- CM185SL-3G4 (Full HD 18.5" Monitor with built-in Quad Split): Dimensions 446 x 263 x 50 mm (6RU). Weight 2,9KG

POWER REQUIREMENTS

- Full HD 18.5" Monitor 12V DC (XLR Connector). Power consumption: 36W

QUAD SERIES

CM185SL-3G4



18,5" HDR Quad-Split LCD Monitor

4 x 3G SDI Inputs | HDMI | DVI | Quad Split | Ultra Light

[General Information](#)[Key Features](#)[Specifications](#)[Image gallery](#)[Ordering info](#)[Product Documents](#)

QUAD SPLIT LCD MONITORS

- CM185SL-3G4 (18,5" LCD Monitor 6RU with built-in Quad Split)