

TELEX®



RadioCom™

Wireless Intercom

wireless that works™

WIRELESSINTERCOM

Innovation, superior design, rugged dependability, intuitive usability; these are the characteristics that have made Telex® RadioCom™ wireless intercoms the definitive wireless communications choice in a multitude of applications. The industry leader in television broadcast, aerospace, industrial, theater, sports, touring sound, military, schools, churches and countless other applications, RadioCom wireless products are the “can’t fail” choice in mission critical applications throughout the world.

With multiple award winning innovations such as the RadioCom BTR-800 two-channel frequency agile wireless intercom system, Telex has led the way with innovative technology that allows users to move around freely while maintaining “wired-like” quality and reliability.

Telex encrypted wireless intercom technology is currently being used in coaching communications applications for the NFL, virtually all College and many high school applications. In addition, Telex’s proprietary encryption technology can be found in security and military applications throughout the world.

Telex RadioCom wireless intercom products are the choice of communications professionals everywhere. Why not make it yours?



Contents

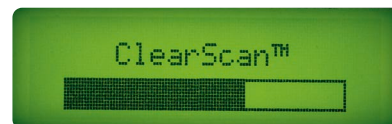
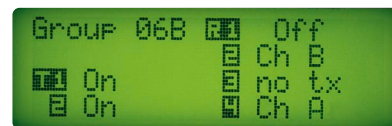
BTR 800 2-Channel Wireless Intercom	3-4
BTR 700 1-Channel Wireless Intercom	5-6
BTR 300 1-Channel Wireless Intercom	7-8
BTR 600/500 Wireless Intercom	9-10
TT 44/TR 34 Transmitter and Receiver	11
SC600 Amplified Broadband Splitter-Combiner	12
Accessories	13
Headsets	14
Specifications	15

What good is technology if you can't make it work for you? So often today in our industry new products come out that are more complicated to use and are consequently a hindrance rather than a tool. Telex has the answer. The new RadioCom 700 and 800 wireless intercom systems are extremely powerful and flexible, yet offer a simplified user interface that let's you get started right out of the box.

Bright, clear, readable, LCD displays put all of the features and information you need to access right at your fingertips. Without layer after layer of menus to deal with, the new Graphical User Interface allows even new users to access, change and store system settings as well as frequency selections.

Three primary screens run the entire operating system with various supplemental screens for other tasks. The status of every beltpack in the system, as well as operating frequencies and group/channel status, is readily available.

The powerful new Enhanced ClearScan™ auto frequency selection feature is easily activated and progress is easily monitored on the Clear Scan progress screen. Results are then displayed and users have the option to accept, reject or modify the results. This dynamic feature allows system frequency selection and setup in just minutes in a new or unknown venue location.



Screen samples of BTR-800 graphical user interface



BTR800

2-Channel UHF Fully User Synthesized Wireless Intercom



- **TR-800 wireless beltpacks.** Four beltpacks per base station. Each BTR-800 base station can support up to four beltpacks in fulltime transmit, full duplex operation. Multiple base station/beltpack systems can be used together to meet the needs of virtually any wireless communications application.
- **Frequency agile.** Choose from 1440 user selectable frequencies using the 800's new revolutionary graphical user interface. Frequencies can be selected from factory preset groups of intermod free choices or any frequency in 25 KHz increments. Select from 720 TX and 720 RX frequencies each from independent 18 MHz operational windows.
- **UHF operation.** Both the BTR-800 and the TR-800s operate in the UHF band from 518 to 740 MHz. Bases and beltpacks operate in specific 18 MHz operational bands. Contact Telex customer service for complete operational band details.
- **Enhanced ClearScan™ frequency auto selection and Graphical User Interface.** (See page 2)
- **Intermodulation-free factory selected groups.** Each 800 system comes with 24 factory selected, pre-intermoded groups that allow even the most uninitiated user to get started right out of the box. Telex has done all of the work for you!
- **Two-channel intercom access from each beltpack.** Hardwired channels are run to the BTR-800 base station and can be 2-wire, 4-wire or mixed. The BTR-800 is fully compatible with AudioCom® RTS™ and Clear-Com® hardwired intercom systems.
- **Stage Announce output with relay closure.** Each beltpack can initiate the Stage Announce feature. The user's audio is routed out the back of the base station via a 3-pin XLR connector. The signal is dry, line level +8 dB and adjustable. A convenient relay closure is provided for triggering two-way radios, IFB sends, green-room speakers or any other closure activated device.



The most versatile wireless intercom ever!

frequency agile
 1440 selectable frequencies
 2 independent intercom channels
 ClearScan™ auto frequency selection
 stage announce output with relay closure
 wireless talk around (broadcast ISO)
 4 beltpacks per base station
 cast magnesium beltpacks
 and so much more

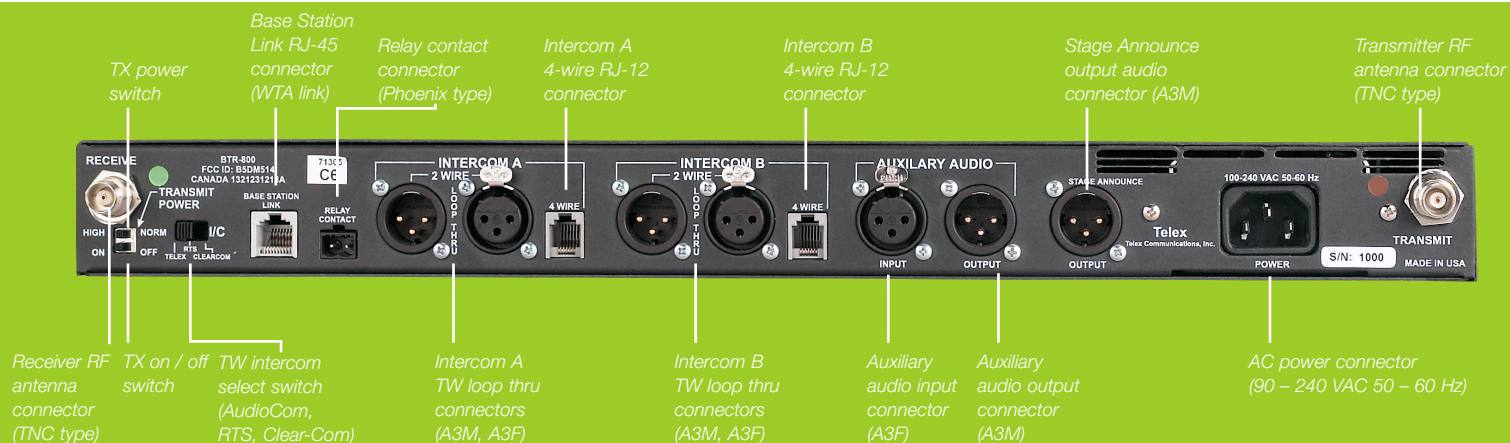


TR-800/700 Beltpack

TR 800/700 beltpacks are small, lightweight and extremely rugged and reliable. All metal construction, an easy-to-read LCD status screen and field replaceable antennas are just a few of the features.

- **Wireless Talk Around (Broadcast ISO).** Each beltpack can momentarily route its audio only to the other wireless beltpacks on its current channel with the push of a button. The user's audio is lifted off of the intercom bus so that only the other wireless beltpacks can hear. This is great for private conversations in the heat of battle.
- **"Fifth Person" Talk/Listen station at base.** The BTR-800 base station features a full talk/listen headset station so that an additional user can communicate on one, the other or both intercom channels at once.
- **Intelligent Power Control™.** This new breakthrough technology takes system range and performance to a whole new level. Each beltpack senses when it is close to the base station and intelligently reduces its output by 10 dB. This effectively eliminates overloading the base station receiver front end which is the primary cause for the "near — far" desensing problem experienced in other wireless intercoms.

- **Cast magnesium beltpacks.** TR-800 beltpacks are constructed of extremely light, strong and durable cast magnesium. Using magnesium substantially decreases the weight of the beltpack while assuring the utmost ruggedness and durability.
- **Two great battery options.** TR-800 beltpacks can be operated from standard Alkaline AA batteries that provide over 14 hours of continuous duty operation. For applications where rechargeable batteries are required optional NiMH battery packs are available. NiMH batteries do not develop harmful memories like NiCads and offer a full 12 hours of operation. Drop-in chargers are also available in single and four-gang configurations.
- **Detachable beltpack antennas.** TR-800 beltpacks feature detachable antennas that utilize stud type threaded connectors that do not have a fragile center pin to break off or bend. Detachable antennas make storage or shipping a breeze.



BTR700

Single Channel UHF Fully User Synthesized Wireless Intercom



- **TR-700 wireless beltpacks.** Four beltpacks per base station. Each BTR-700 base station can support up to four beltpacks in fulltime transmit, full duplex operation. Multiple base station/beltpack systems can be used together to meet the needs of virtually any wireless communications application.
- **Frequency agile.** Choose from 1440 user selectable frequencies using the 700's new revolutionary graphical user interface. Frequencies can be selected from groups of intermod free choices, or any frequency in 25 KHz increments. Select from 720 TX and 720 RX frequencies each from independent 18 MHz operational windows.
- **UHF operation.** Both the BTR-700 and the TR-700s operate in the UHF band from 518 to 740 MHz. Bases and beltpacks operate in specific 18 MHz operational bands. Contact Telex customer service for complete operational band details.
- **Enhanced ClearScan™ frequency auto selection and Graphical User Interface.** (See page 2)
- **Intermodulation-free factory selected groups.** Each 700 system comes with 24 factory selected, pre-intermoded groups that allow even the most uninitiated user to get started right out of the box. Telex has done all of the work for you!



The most versatile wireless intercom ever!

frequency agile

1440 selectable frequencies

ClearScan™ auto frequency selection

4 beltpacks per base station

cast magnesium beltpacks

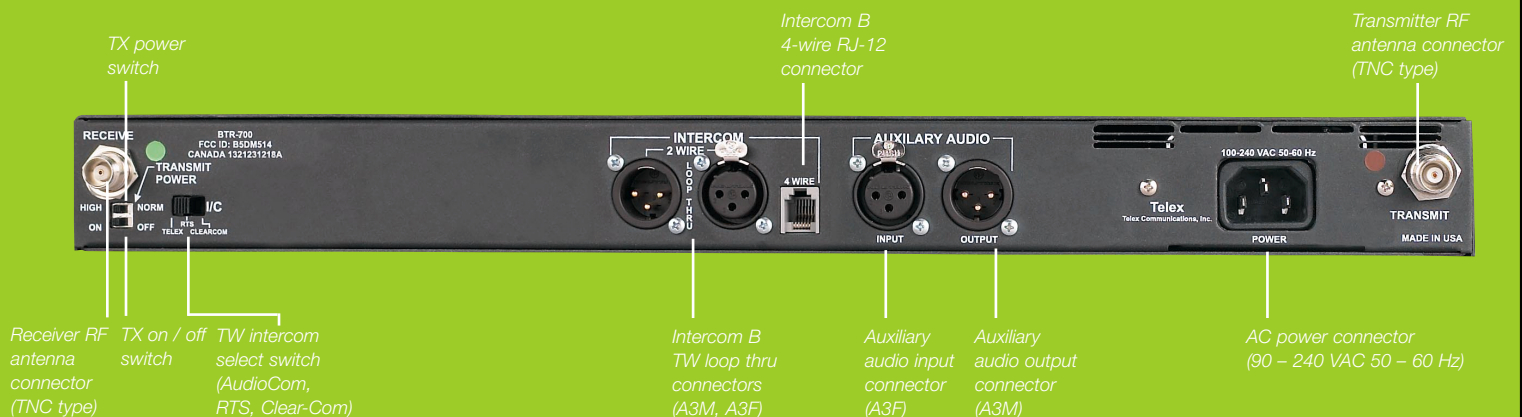
and so much more



BTR-800/700 battery charger

The new modular drop-in battery charger has fast and trickle charge ability as well as the ability to recondition older batteries with the push of a button.

- **“Fifth Person” Talk/Listen station at base.** The BTR-700 base station features a full talk/listen headset station so that an additional user can communicate on the intercom channel.
- **Intelligent Power Control™.** This new breakthrough technology takes system range and performance to a whole new level. Each belt-pack senses when it is close to the base station and intelligently reduces its output by 10 dB. This effectively eliminates overloading the base station receiver front end which is the primary cause for the “near — far” desensing problem experienced in other wireless intercoms.
- **Cast magnesium belt-packs.** TR-700 belt-packs are constructed of extremely light, strong and durable cast magnesium. Using magnesium substantially decreases the weight of the belt-pack while assuring the utmost ruggedness and durability.
- **Detachable belt-pack antennas.** TR-700 belt-packs feature detachable antennas that utilize stud type threaded connectors that do not have a fragile center pin to break off or bend. Detachable antennas make storage or shipping a breeze.
- **Two great battery options.** TR-700 belt-packs can be operated from standard Alkaline AA batteries that provide over 14 hours of continuous duty operation. For applications where rechargeable batteries are required optional NiMH battery packs are available. NiMH batteries do not develop harmful memories like NiCads and offer a full 12 hours of operation. Drop-in chargers are also available in single and four-gang configurations.



RadioCom™

BTR 700/800 BANDS

Desig	TV	Strat Freq	Use	Telex Band	End Freq	TV	Desig
A	22	518	BTR TX	518	524	22	A
	23	524	Low	to	530	23	
	24	530	TR Rx	536	536	24	

B	25	536	BTR TX	536	542	25	B
	26	542	Future	to	548	26	
	27	548	TR Rx	554	554	27	

C	28	554	BTR TX	554	560	28	C
	29	560	High	to	566	29	
	30	566	TR Rx	572	572	30	

D	31	572	BTR TX	572	578	31	D
	32	578	Future	to	584	32	
	33	584	TR Rx	590	590	33	

E	34	590	BTR TX	590	596	34	E
	35	596	Future	to	602	35	
	36	602	TR Rx	608	608	36	

37	608	Radio Astronomy	614	37
----	-----	-----------------	-----	----

1	38	614	TR TX	614	620	38	1
	39	620	Future	to	626	39	
	40	626	BTR RX	632	632	40	

2	41	632	TR TX	632	638	41	2
	42	638	Low	to	644	42	
	43	644	BTR RX	650	650	43	

3	44	650	TR TX	650	656	44	3
	45	656	Future	to	662	45	
	46	662	BTR RX	668	668	46	

4	47	668	TR TX	668	674	47	4
	48	674	Future	to	680	48	
	49	680	BTR RX	686	686	49	

5	50	686	TR TX	686	692	50	5
	51	692	Future	to	698	51	
	52	698	BTR RX	704	704	52	

6	53	704	TR TX	704	710	53	6
	54	710	High	to	716	54	
	55	716	BTR RX	722	722	55	

7	56	722	TR TX	722	728	56	7
	57	728	Future	to	734	57	
	58	734	BTR RX	734	740	58	

Note - First Shipment BTR/TR-800 units will be C-6 frequency sets.

Note - BTR/TR-800 units on A-2 frequency sets will ship in Sept.

BTR/TR 700/800 Part no Tabelle				
Base	Part no	Beltpack	Part no	Frequency Combination
BTR800	407000	TR-800	407001	C6
BTR800RTS	407998	TR-800RTS	40999	C6
BTR700		TR-700		
BTR700RTS	407064	TR-700RTS	407065	C6

BTR300

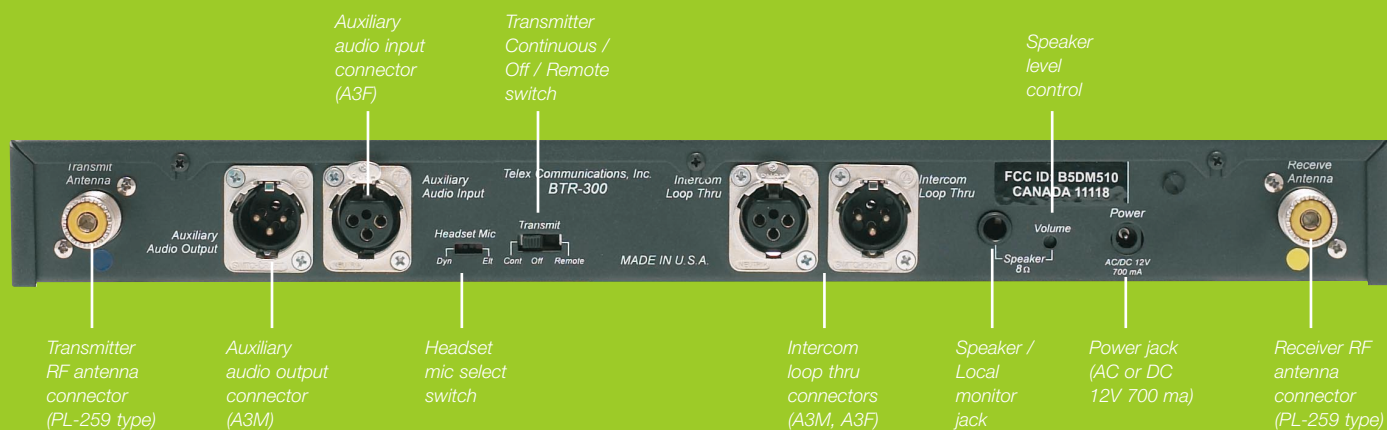
Single channel VHF fixed crystal wireless intercom

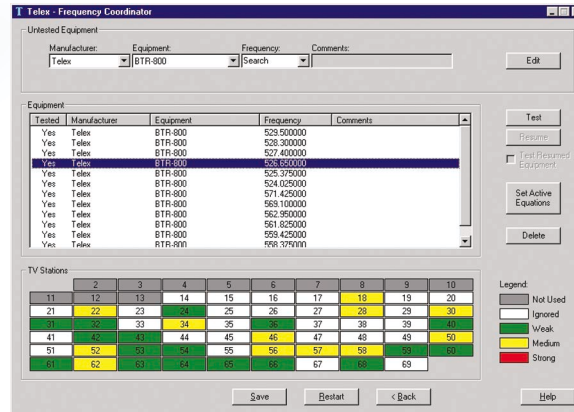


The BTR-300 wireless intercom system is the first wireless intercom to be designed specifically with DTV band allocations in mind. Improved front end filtering allows the BTR-300 to be used in RF environments where other wireless intercoms simply can't function. Additional filtering capabilities and unique channel assignments allow up to four base stations and 16 individual beltacks to be used simultaneously. Break the chains of wired communications without breaking the budget. Get the reliable, affordable RadioCom BTR-300.

- **Cost Effective.** The BTR-300 is the most cost effective wireless intercom system available for professional and industrial applications. Now anyone can actually afford to go wireless on a large scale. No more costly interruptions while new cabling is run for an unexpected production change. Your projects can finally have the communications flexibility and mobility you need, without putting a hole in your budget.

- **Quality Audio.** Unique audio shaping circuitry and superior RF design combine to give the BTR-300 wired intercom quality sound.
- **Front End Filtering.** The BTR-300 utilizes sophisticated "high Q" front end technology to filter out potentially harmful RF signals before they get the chance to cause harmful interference even in hostile RF environments.
- **Band Allocation.** The BTR-300 operates in the High VHF frequency range avoiding most DTV transmissions. In addition, a computerized frequency selection scheme ensures maximum channel operability.
- **Operating Range.** Beltacks can operate at ranges of up to 2000 feet line of sight (beltack to beltack), even in hi RF environments where interference plagues other systems.





Proprietary Intermodulation Calculation Program

Using a state of the art proprietary intermod application Telex ensures that the frequencies you get will work together and in your operational area.

- **More Beltpacks.** With improved front end filtering and an innovative frequency selection plan, the BTR-300 now supports up to four base stations and 16 beltpacks in simultaneous operation. That's two times the number previously available.
- **Small, Rugged Beltpack.** The TR-300 beltpack won't drag you down like other bulkier products. Weighing only 13 ounces (with batteries) and measuring only 2 inches in depth, the TR-300 utilizes the latest in polycarbonate resin technology to deliver unparalleled durability while maintaining a lightweight, wearer-friendly package.
- **Extended Battery Life.** Optional NiMH (Nickel Metal Hydride) batteries provide 17 hours of continuous transmit operation. 24 hours of continuous operation is available with alkaline AA's. The longest battery life of any professional wireless intercom available today.
- **In Pack Charging.** Convenient charging jack on the TR-300 beltpack allows optional NiMH batteries to be recharged without removing them from the beltpack. (External charging is also supported.)
- **Ease Of Use.** A new ergonomically designed user interface, with well labeled controls and bright status light indicators enables quick system setup and low learning curves.
- **Compatibility.** Advanced intercom audio interface circuitry allows seamless operation with all major intercom systems.
- **Full Duplex Operation.** No more waiting! Unlike walkie-talkies, individual talk frequencies for each beltpack allow all wireless users to talk and listen simultaneously for more natural communications.



- Cost effective
- Good quality audio
- Longer operating range
- Up to 16 beltpacks with 4 bases
- Up to 24 hours of continuous battery life
- Full duplex operation
- All VHF operation
- Easy to use

RadioCom™

BTR600/500

UHF Wireless Intercom Systems



The Telex® RadioCom™ BTR-600/500 UHF Wireless intercom systems offer the ultimate in reliable, high performance, full duplex communications. Operating in the 520 to 760 MHz range the units operate reliably at distances of over 1,000 feet. Various types of log periodic antennas are available that can increase the effective range to 1/2 mile or more depending on site conditions.

- **Auto Switching.** The BTR-600 series incorporates auto-switching 2 channel audio operation, permitting the belt pack user to select between 2 sperate audio channels of communication. Auto-switching provides the flexibility to create private and party lines within the same belt pack.
- **Two Channel Frequency Agility.** The BTR-600/500 series also incorporates two channel frequency agility. The base station and belt pack have two UHF receive frequencies that allow the user to escape frequency interference problems that may arise.

- **Compatibility.** The BTR-500/600 series is perfectly suited for stand-alone (single-drop) operation and easily expands up to 16 BTR/TR sets permitting up to 32 discrete full duplex channels. The systems are fully compatible with RTS™ TW and Audiocom™ party line intercoms, as well as RTS Digital Matrix systems and other 4 wire communications systems. The systems easily adapt to other types of party line intercoms using an optional CCB-1 adaptor. The base station also allows connections for auxiliary balanced line level audio input and output.

- **Digital Encryption.** The BTR-600 series includes a unique patented digital encryption process for those who need secure full duplex communications. The 600 series offers over 65,000 code settings that can be changed on the fly by means of 4 cipher code switches on the units.



- Full duplex
- Dual frequency agility
- Modular design 1-16 sets
- All metal, weather-resistant belt pack
- Dual function talk button — momentary or locked on
- Individual level controls — providing unparalleled user flexibility
- Direct interface to RTS TW and Telex Audiocom
- Two channel audio auto-switching
- RTS Digital Matrix compatible
- 520-720 MHz band



Code Switch:
Allows operator to select up to 65,000 different cipher codes (BTR-600 set only).

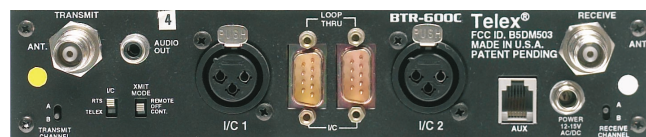
- **Full Duplex Channels.** The BTR-500 series includes the BTR-500 frequency agile base station, working with the TR-500 base station provides full duplex communications with a single belt pack, or can accommodate multiple belt packs operating in push to transmit mode. 16 BTR-600s (or more) may be operated simultaneously, permitting 32 (or more) discrete full duplex channels.

How The System Works.

The BTR-600/500 set provides full duplex communications with a single belt pack transceiver. The BTR-600/500 base station transmits a UHF frequency that the TR-600/500 receives and simultaneously transmits a UHF frequency that the base station receives.

1 to 16 BTR-600/500 sets may be operated simultaneously permitting full duplex communications. Units can be linked together to create private or party line communications (units linked with interconnect cable provided).

Shown:
National Football League Coaches' System featuring 8 BTR-600 sets and an SC-600 antenna combiner.



BTR-600/500 back

6 "drop" system interfaced into wired party line intercom



Mirror Image System: belt pack to belt pack



TT44/TR34

16 Channel Synthesized Wireless IFB Transmitter and 16 Channel Tunable Talent Receiver



TT-44

The Telex RadioCom TT-44 is a 16 channel synthesized wireless IFB transmitter designed to provide a wireless link to on-air talent in the studio or while you are in the field. Operating in the 64-68 MHz range the units operate reliably at distances of over 750 feet.

The TT-44 transmitter has a 3 pin XLR input on the back of the unit with a selector switch to accept either RTS TW, Telex Audiocom/RadioCom, or other types of wired and wireless intercom input. there is also a 1/4" unbalanced line level signal input jack. The T-44 offers the flexibility of tuning 8 of its frequencies in the TV channel 3 band and 8 in the TV channel 4 band for ultimate agility while in the field. Up to 5 transmitters will operate simultaneously within the same environment.



TT-44 Back

TR-34

The TR-34 is a 16 channel tunable talent receiver that is designed to be used with the standard IFB earpieces such as the Telex Telethin announcers earpiece systems or any other 8-500 ohm earphone. The TR-34 features a selectable high frequency boost control to equalize the high frequency loss associated with the use of behind the collar acoustic tubes and earphone drivers. The receiver also features a lighted bezel for easy channel identification and auto power off when the earphone is removed from the jack. The TR-34 operates on two standard AA batteries and will operate for up to 40 hours on alkaline batteries.



- Good audio quality
- Low band VHF operation
- Compatible with all major intercoms
- Lighted bezel for easy channel selection
- Auto power off when earpiece is removed
- Up to 5 transmitters in simultaneous use
- 16 channel frequency agility
- Range of over 750 feet

SC600

Amplified Broadband Splitter-Combiner

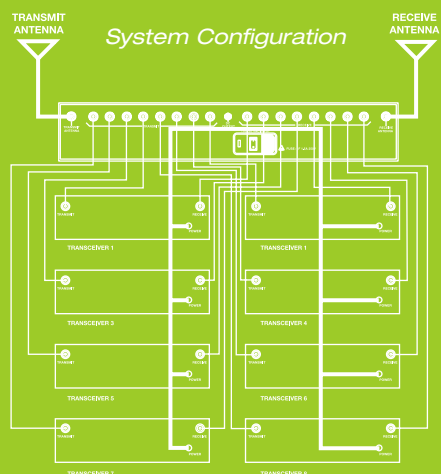


SC-600

The SC-600 Amplified Broadband Splitter-Combiner makes it possible to operate eight UHF wireless intercom base transceivers using only two antennas. In addition to accommodating eight transmit and eight receiver antennas, it provides power connection for up to eight base transceivers. It also features a high degree of output isolation — a necessity in multi-frequency systems to prevent intermodulation. It is the ideal complement to your BTR600/500 or 700 UHF Wireless Intercom System.



SC-600 Back



- Reduces 16 antennas to two
- Extremely low intermod production
- Compatible with 500, 600 and 700 systems
- Handles both transmit and receive
- Rugged and durable construction
- Made in the USA

ACCESSORIES



BTR-700/800
Battery Charger



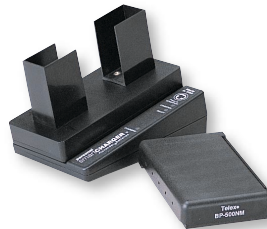
ALP-600



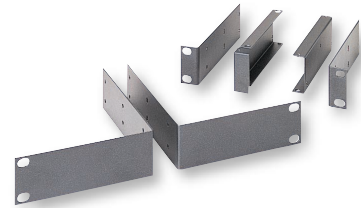
ALP-450



ALP-600 Mast
and Bracket Kit



BC-500NM
Battery and Pack



Single and Double
Rack Mounts

VHF Base Station Accessories

Model	Description
UX-58	Omnidirectional 5/8 wave antenna (multiple frequency ranges)
YAG	High performance directional Yagi antenna (multiple frequency ranges)
ALP-1	Directional super-performance log periodic antenna 165-216 MHz includes MNT.BRKT
CX-4	50 ohm copper stranded coax cable 4'
CX-25	50 ohm copper stranded coax cable 25'
AB-300	Combo mic stand/wall mount bracket for 5/8 WV
PA-2	Replacement wall type power supply BTR-200/300 120 volt
PA-2E	230V Euro wall type power supply for BTR-200/300
PA-2U	230V UK wall type power supply for BTR-200/300

VHF Radiocom™ Belt Pack Accessories

Model	Description
CL-2	Replacement clip/door for TR-200/300-complete
BSL-1	Spare battery sled for TR-200/300
BC300NM1	Battery charger w/6 nickel metal hydride batteries and sled Will charge TR-300 without removing battery pack
BC300NM2	Battery charger w/6 nickel metal hydride batteries and sled Will charge batteries outside beltpack TR-200/TR-300
NMBP	Battery pack - includes 6 nickel metal hydride batteries and sled - TR-200/TR-300
TRH-1	Heavy duty leather swivel holster with belt loop for TR-200/300

UHF Belt Pack Accessories

Model	Description
BC-500 N/M	Charger w/ nickel metal battery pack
BP-500 N/M	Spare nickel metal belt battery pack
BP-500	Spare battery sled for alkaline (batteries not included)
BTR-SR0	Dry contact signal relay option (per set) NFL QB signal kit TR/BTR-600
BP-700	Alkaline battery holder, TR700/TR800
BC-700NM	NMH battery pack, TR700/TR800
BC-700NM(US)	Single charger w/linear US power supply and NMH pack
BC-700NM(Euro)	Single charger w/switching power supply, Euro cord, NMH pack

UHF Belt Pack Accessories (cont.)

Model	Description
BC-700NM(UK)	Single charger w/switching power supply, UK cord, NMH pack
BC-700NM4	4bay charger w/switching power supply, 4NMH packs, US cord
BC-700NM4(Euro)	4bay charger w/switching power supply, 4NMH packs, Euro cord
BC-700NM4(UK)	4bay charger w/switching power supply, 4NMH packs, UK cord

UHF Base Station Accessories

Model	Description
ALP-600	Bi-directional log periodic antenna. Covers 520-760 MHz. Includes mounting hardware and 10' (3 meters) coaxial cable with TNC connector
ALP-600B	ALP-600 antenna bracket kit
ALP-600M	ALP-600 antenna mast-telescoping
ALP-450	Directional log periodic ant. covers 450-900 MHz forward coverage pattern increases signal gain up to 5 dB. Supplied with mounting hardware for wall or mic stand, & 10' coaxial cable. Measures 9-1/2" L x 11" H painted matte black.
CLA	1/2 Wave colinear ant. (multiple frequency ranges)
AB-2	Universal bracket for model CLA-X 1/2 wave antennas w/10' coax
CXU-25	25' 50 ohm low loss coaxial cable, TNC connector
CXU-50	50' 50 ohm low loss semi-flexible coaxial cable, TNC connector
CXU-75	75' 50 ohm low loss semi-flexible coaxial cable, TNC connector
CXU-100	100' 50 ohm low loss semi-flexible coaxial cable, TNC connector
TP-2	TNC 50 ohm termination plug for SC-600 antenna combine
RMS-BTR	Single rack kit for BTR-500/600
RMD-BTR	Dual rack kit for BTR-500/600
PA-5	Replacement power supply for BTR-500/600 110V
TP-3	XLR-3 Intercom "dummy load" plug (Audiocom)
TP-3R	XLR-3 Intercom "dummy load" plug (RTS)
BTR-DB9	DB-9 Base interconnect cable

HEADSETS



HR-1



HR-2



PH-10



PH-44



PH-1



PH-2



PH-3



PH-88

The HR-1 is a single muff, medium-weight passive noise reduction headset with dynamic noise canceling microphones. The headset has a noise reduction rating of 21 dB; suitable for use in a moderately noisy environment. The ergonomic headband design distributes the ear cushion pressure evenly over the entire ear with no pressure points, insuring hours of comfortable wear. An added advantage of this headset design is that it folds into compact form for ease of storage. Available with 4 or 5 pin XLR connectors (Male or Female).

The HR-2 is a dual muff, medium-weight passive noise reduction headset with dynamic noise canceling microphones. The headset has a noise reduction rating of 21 dB; suitable for use in a moderately noisy environment. The ergonomic headband design distributes the ear cushion pressure evenly over the entire ear with no pressure points, insuring hours of comfortable wear. An added advantage of this headset design is that it folds into compact form for ease of storage. Available with 4 or 5 pin XLR connectors (Male or Female).

The PH-1 is a medium-weight single muff headset with foam filled cushions that offer a light feel with moderate isolation from ambient noise. The dynamic noise canceling mic is easily positioned with a unique ball joint for continuous adjustability. Available with 4 or 5 pin XLR connectors (Male or Female).

The PH-2 is dual muff mono, medium-weight headset with foam filled cushions that offer a light feel with moderate isolation from ambient noise. The dynamic noise canceling mic is easily positioned with a unique ball joint for continuous adjustability. Available with 4 or 5 pin XLR connectors (Male or Female).

The PH-3 is a dual muff stereo, medium-weight headset with foam filled cushions that offer a light feel with moderate isolation from ambient noise. The dynamic noise canceling mic is easily positioned with a unique ball joint for continuous adjustability. Available with 5 pin XLR connectors (Male or Female).

The PH-10 is the maximum in passive noise reduction. This super heavy-duty headset offers snug fitting dual-sided, monaural headphones with a dynamic, noise-canceling microphone for use in high noise environments. The PH-10 offers an Environmental Protection Agency (EPA) rated noise reduction rating (NRR) of 24 dB. Perfect for industrial and concert applications. Available with 4 or 5 pin male or female XLR connectors.

The PH-44 headset is a dual muff super lightweight for the ultimate in daylong comfort. It offers a dynamic noise canceling gooseneck microphone with a semi-rigid, fully adjustable boom for precise positioning. The high quality wide band dynamic earphones are covered in moleskin for better fit, isolation and frequency response. Available with 4 or 5 pin male or female connectors XLR.

The PH-88 is a single muff mono super lightweight for the ultimate in daylong comfort. It offers a dynamic noise canceling gooseneck microphone with a semi-rigid, fully adjustable boom for precise positioning. The high quality wide band dynamic earphones are covered in moleskin for better fit, isolation and frequency response. Available with 4 or 5 pin male or female connectors XLR.

RadioCom™ SPECIFICATIONS

	BTR-800/BTR-700	BTR-300	BTR600/500	TR800/TR700	TR300	TR600/TR500
Overall						
RF Frequency Range:	518 – 608 MHz, 614 – 740 MHz in 18 MHz TX and RX bands	150 – 216 MHz	520 – 608 MHz, 614 – 760 MHz	518 – 608 MHz, 614 – 740 MHz in 18 MHz TX and RX bands	150 – 216 MHz	520 – 608 MHz, 614 – 760 MHz
Power Requirement:	100-240 VAC, 50 - 60 Hz, IEC receptacle	12 to 15 AC/DC (power supply included)	115 VAC, 60 Hz, 8W (230 Vac, 50Hz, Model Avail.) or 12 to 15 V AC/DC (external)	6 "AA" Cells Alkaline (NIMH optional)	6 AA Cells (Alkaline, NEDA, MN1500); (NIMH optional)	6 "AA" Cells Alkaline (NIMH optional)
Typical Battery Life Alkaline:	N/A	N/A	N/A	14 Hours (Continuous duty with talk light on)	24 Hours (Continuous duty with talk light on)	12 Hours (Continuous duty with talk light on)
Typical Battery Life Nickel Metal Hydride (1500 mAh):	N/A	N/A	N/A	11 Hours (Continuous duty with talk light on)	17 Hours (Continuous duty with talk light on)	10 Hours (Continuous duty with talk light on)
Current Draw:	N/A	N/A	N/A	140 mA (Push-to-Talk, Talk On)	Typical 82 mA	120mA
Temp Range:	-4°F to 130°F (-20°C to 55°C)	-4°F to 130°F (-20°C to 55°C)	-4°F to 130°F (-20°C to 55°C)	-4°F to 130°F (-20°C to 55°C)	-4°F to 130°F (-20°C to 55°C)	-4°F to 130°F (-20°C to 55°C)
Dimensions:	19.0" W × 1.72" H × 14.0" D (48.3 cm × 4.4 cm × 35.6 cm)	15.75" W × 1.75" H × 10.5" D (40 cm × 4.5 cm × 27 cm)	8.25" W × 1.75" H × 11.25" D (21 cm × 4.5 cm × 28.6 cm)	3.75" W × 5.05" H × 1.65" D (9.5 cm × 12.8 cm × 4.2 cm)	4.25" W × 4.125" H × 2.0" D (108 mm × 105 mm × 51 mm)	4.00" W × 5.875" H × 1.625" D (102 mm × 149 mm × 41 mm)
Weight:	7 lbs. 2 oz. (3.24 kg) / 6 lbs. 15 oz. (3.15 kg)	6 lbs. 2 oz. (2.8 kg)	4 lbs. (1.8 kg)	15 oz. (425 g) with alkaline batteries/ 16 oz. (454 g) with alkaline batteries	13.5 oz. with batteries (384 g)	1 lb. 6 oz. (625 g) with batteries
Transmit Antenna:	1/2 Wave (supplied) TNC Male Connector	5/8 Wave (supplied) SO239 connector on chassis	1/2 Wave (supplied) TNC connector on chassis	1/4 Wave (supplied), Screw type	1/4 Wave (attached)	1/4 Wave Wire (attached)
Receive Antenna:	1/2 Wave (supplied) TNC Male Connector	5/8 Wave (supplied) SO239 connector on chassis	1/2 Wave (supplied) TNC connector on chassis	1/4 Wave (supplied), Screw type	1/4 Wave (attached)	1/4 Wave Wire (attached)
FCC ID:	B5DM514	N/A	N/A	B5DM515	N/A	N/A
Frequency Response:	300-8 KHz	300 – 5 KHz	300 – 4.5 KHz / 300 – 8 KHz	300-8 KHz	300 – 5 KHz	300 – 4.5 KHz / 300 – 8 KHz
Four Wire Input:	Level Adjustable (2 Vrms typical)	N/A	N/A	N/A	N/A	N/A
Four Wire Output:	Level Adjustable (2 Vrms typical)	N/A	N/A	N/A	N/A	N/A
Telex® Intercom:	Input/Output Level Adjustable (1 Vrms typical), Line impedance 300 Ω	Input/Output Level Adjustable (1 Vrms typical), Line impedance 300 Ω	Input/Output Level Adjustable (1 Vrms typical), Line impedance 300 Ω	N/A	N/A	N/A
RTS® Intercom:	Input/Output Level Adjustable (0.775 Vrms typical), Line Impedance 200 Ω	Input/Output Level Adjustable (0.775 Vrms typical), Line Impedance 200 Ω	Input/Output Level Adjustable (0.775 Vrms typical), Line Impedance 200 Ω	N/A	N/A	N/A
ClearCom® Intercom:	Input/Output Level Adjustable (1 Vrms typical), Line Impedance 200 Ω	Input/Output Level Adjustable (1 Vrms typical), Line Impedance 200 Ω	Interface required	N/A	N/A	N/A
Auxiliary Input:	Adjustable (2 Vrms typical)	2 VRMS	Adjustable (2 Vrms typical)	N/A	N/A	N/A
Auxiliary Output:	Adjustable (2 Vrms typical into 600 Ω) (at rated deviation)	2 VRMS into 600 ohm load typical (at rated deviation)	Adjustable (2 Vrms typical into 600 Ω) (at rated deviation)	N/A	N/A	N/A
Stage Announce Output:	Internally Adjustable (1Vrms typical at rated deviation into 100 KΩ) / N/A	N/A	N/A	N/A	N/A	N/A
Stage Announce Relay:	Dry contact, rated at 1Amp, 24 V Max. / N/A	N/A	N/A	N/A	N/A	N/A
Transmitter						
Type:	Synthesized, 720 channels	Crystal Controlled	Crystal Controlled, Switchable	Synthesized, 720 channels	Crystal Controlled	Crystal Controlled, Switchable
Transmit Power:	100 mW Max. (High), 10 mW (Normal) / 50 mW Max. (High), 10 mW (Normal)	50 mW	40 mW	50 mW Max. (Auto-power reduction when close to base)	50 mW	40 mW
RF Frequency Range:	518 – 608 MHz, 614 – 740 MHz in 18 MHz TX and RX bands	150 – 216 MHz	520 to 608 and 614 to 760 MHz	518 – 608 MHz, 614 – 740 MHz in 18 MHz TX and RX bands	150 – 216 MHz	520 – 608 and 614 – 760 MHz
RF Frequency Stability:	0.005%	Crystal Controlled, 0.005%	Crystal Controlled, 0.005%	0.005%	Crystal Controlled, 0.005%	Crystal Controlled, 0.005%
Modulation:	FM, 40 KHz Deviation	FM, 3000 Hz Deviation, 115 micro-seconds Pre-emphasis	F-1-E ±32 KHz deviation 62.5 K baud	FM, 40 KHz Deviation	FM, 3000 Hz Deviation, 115 micro-seconds Pre-emphasis	F-1-E ±32 KHz deviation 62.5 K baud / F3 40 KHz deviation 100 micro-seconds Pre-emphasis
Modulation Limiter:	Peak-Responding Compressor	Internal Compressor	Internal Compressor	Peak-Responding Compressor	Internal Compressor	Internal Compressor
Modulation Frequency Range:	300 – 8000 Hz ±2 dB	300 – 5000 Hz ±2 dB /	300 – 4500 Hz ±2 dB 300 – 8000 Hz ±2 dB	300 – 8000 Hz ±2 dB	300 – 5000 Hz ±2 dB 300 – 8000 Hz ±2 dB	300 – 4500 Hz ±2 dB /
Microphone Audio Input:	30 ohms – 3500 ohms	30 ohms – 3000 ohms	30 ohms – 3500 ohms	30 ohms – 3500 ohms	30 ohms – 3500 ohms	30 ohms – 3500 ohms
Microphone Input Sensitivity:	9 mV	2 mV Dynamic, 4 mV Electret	2 mV	7 mV	2 mV Dynamic, 4 mV Electret	2 mV
Radiated Harmonics & Spurious:	Exceeds FCC specifications	-45 dBC, Exceeds FCC Specifications	-45 dBC	Exceeds FCC specifications	-45 dBC, Exceeds FCC Specifications	-45 dBC
FCC Acceptance:	Type accepted under FCC Part 74	Under Parts 90 and 74	Type accepted under FCC Part 74	Type accepted under FCC Part 74	Under Parts 90 and 74	Type accepted under FCC Part 74
Receiver						
Type:	Dual Conversion Superhetrodyne, Synthesized, FM, 720 channels	Dual Conversion Superhetrodyne, FM	Single Conversion Superhetrodyne, FM	Dual Conversion Superhetrodyne, Synthesized, FM, 720 channels	Dual Conversion Superhetrodyne, FM	Single Conversion Superhetrodyne, FM
RF Sensitivity:	<0.7 µV for 12 dB SINAD	Less than 0.5 µV for 12 dB SINAD	<0.7 µV for 12 dB SINAD	<0.7 µV for 12 dB SINAD	Less than 0.5 µV for 12 dB SINAD	<0.7 µV for 12 dB SINAD
Squelch Threshold:	20 dB SINAD (About 1.0uV)	20 dB Quieting	3.0 µV / 1.5 µV	20 dB SINAD (About 1.0 µV)	20 dB Quieting	3.0 µV / 1.5 µV
Signal-to-Noise Ratio:	95 dB	90 dB	55 dB / 63 dB	95 dB	90 dB	55 dB/63 dB
IF Selectivity:	3 dB at 230 KHz	3 dB at 30 KHz (4 pole Monolythic Filters)	3 dB at 230 KHz / 3 dB at 150 KHz (Ceramic Filter)	3 dB at 230 KHz	3 dB at 30 KHz (Ceramic Filters)	3 dB at 230 KHz / 3 dB at 150 KHz (Ceramic Filter)
Image Rejection:	70 dB or better	65 dB or better	70 dB or better	70 dB or better	70 dB or better	70 dB or better
Squelch Quieting:	95 dB	90 dB	67 dB / 65 dB	95 dB	90 dB	67 dB / 65 dB
RF Frequency Range:	N/A	150 to 216 MHz	520 to 608 and 614 to 760 MHz	N/A	150 to 216 MHz	520 to 608 and 614 to 760 MHz
RF Frequency Stability:	0.005%	Crystal Controlled, 0.005%	Crystal Controlled, 0.005%	0.005%	Crystal Controlled, 0.005%	Crystal Controlled, 0.005%
Distortion:	<1% at full deviation	Less than 1% at Rated Output	<3.5% / <1.5% at Rated Output	<1% at full deviation	Less than 1% at Rated Output	<3.5% / <1% at Rated Output
Local Headset Output:	40 mW output into 600 Ω (1% Distortion)	N/A	32 mW into 600 ohms	40 mW output into 600 Ω (1% Distortion)	32 mW into 600 ohms	32 mW into 600 ohms
FCC Acceptance:	Notification under FCC Part 15	Notification under FCC Part 15	Notification under FCC Part 15	Notification under FCC Part 15	Notification under FCC Part 15	Notification under FCC Part 15

All specifications are subject to change without notice.

Distributed by:

Telex Communications, Inc.
12000 Portland Avenue South
Burnsville, MN 55337
1-800-392-3497
www.telex.com

All trademarks are the property of their respective owners.

wireless that works™ RadioCom™